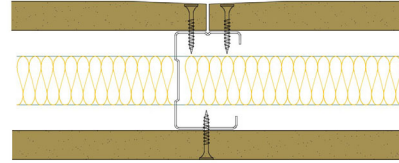


50-B-52(25) - SPEEDLINE System Data Sheet - Version V1 (24-10-23)

SPEEDLINE 50mm 'C' Stud Partition @600mm Ctrs,
with BG Gyproc 15mm WallBoard each side,
25mm APR



System Performance Breakdown

Fire Resistance:

BS476 Part 22:1987:

Test Ref & Date or Applied Ref & Report:

Max Height:

Thickness:

Duty Grade: BS 5234: Part 2:1992:

Sound Insulation:

30/30 Minutes (Integrity/Insulation).

BTC 17439F - BRE Report P102396-1011A

Refer to Speedline Specification Clause

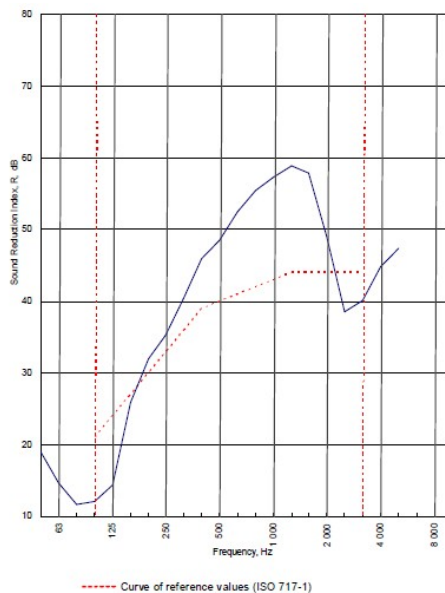
82 mm. (At Base Track, Excluding Finishes)

Heavy - Annexes A-F

40 R_w dB, Date Tested or Assessed Against - 12/07/2011


Test Code:
H17480AA
Test Date:
12/07/2011


Freq. Hz	R dB
50	19.0
63	14.6
80	11.7
100	12.1
125	14.3
160	25.8
200	32.0
250	35.3
315	40.3
400	45.9
500	48.5
630	52.5
800	55.5
1 000	57.3
1 250	58.8
1 600	57.9
2 000	49.0
2 500	38.5
3 150	40.1
4 000	44.8
5 000	47.3
6 300	
8 000	
10 000	





Rating according to BS EN ISO 717-1:1997	R_w (C;Ctr) = 40 (-4;-10) dB		
Evaluation based on laboratory measurement results obtained by an engineering method:	$C_{50-3150} = -4$ dB	$C_{50-5000} = -3$ dB	$C_{100-5000} = -3$ dB
	$C_{125-3150} = -13$ dB	$C_{125-5000} = -13$ dB	$C_{125-6000} = -10$ dB

TESTED AT ONE OF THE UKAS ACCREDITED LABORATORIES BELOW

B.T.C (H-Ref on Graph) 

B.R.E 

AIRO 

S.R.L 

Customer: Metsec plc Hepsec Division

BTC 17480A: Page 9 of 11



SPEEDLINE Drywall Systems, Adsetts House, 16 Europa View, Sheffield Business Park, Sheffield, S9 1XH.

Tel: 0114 231 8030.

Email: enquiries@speedlinedrywall.co.uk

(As per the requirements set out in ISO/IEC 17025:2017 regarding test data the results stated have been carried out by voestalpine Metsec plc as part of the contract to supply Speedline Metal Sections to SIG Plc)